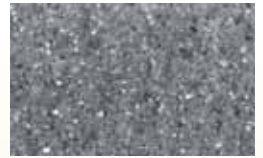


# Gardenstone<sup>®</sup>

From...



## Garden Wall System



Charcoal



Oakdale



Appin Stone



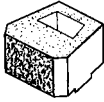
- ❖ Easy to use
- ❖ Do it yourself
- ❖ Only 8 kgs each
- ❖ No concrete required
- ❖ Flexible - straight or curved walls
- ❖ Suitable for garden edging and borders

**Australian Owned, Designed and Manufactured.**

# ESTIMATING DATA

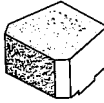
## Gardenstone Block

- 240L x 190W x 120mm H
- 4.2 Blocks per lineal metre
- 35 blocks per square metre
- 8kg each



## Gardenstone Cap

- 240L x 190W x 120mm H
- 4.2 Blocks per lineal metre
- 10kg each



## CALCULATING BLOCK QUANTITIES

### - Example wall

12.0m long x 0.48m high = 5.76m<sup>2</sup> x 35 blocks per m<sup>2</sup> = 202 block overall

**LESS** 12 lineal metres x 4.2 capping blocks per metre = 50 capping blocks

Blocks required to complete job = 152 Gardenstone Blocks  
+ 50 Gardenstone Capping Blocks

**\* PLEASE NOTE:-** Gardenstone blocks should not be used for walls over 4 courses high, and are not suitable for load bearing walls. For these instances please refer to the 'NORFOLK' or 'TASMAN' Retaining wall product.

## INSTALLATION GUIDE

### Step 1: FOOTING

Dig out trench approx. 150mm deep. The trench should be 500mm wide. Place and compact 100mm of fine crushed rock (gravel).



### Step 2: SAND BED

Spread 25mm of sharp sand over the compacted base. This should be in a straight line and checked with a level. If the wall tapers, run a string line at the desired finish level, then gauge down at multiples of 120mm.



### Step 3: FIRST COURSE

The first block course is now bedded into the sand bed. The use of a level and string is recommended to ensure that the first course is laid correctly. Make sure approx. 75mm of the first block course is buried below the finish ground level with gravel well compacted along the front of the blocks to stabilise.



### Step 4: DRAINAGE/BACKFILLING

Where an agpipe or strip drain is used, place behind base of first course. Backfill behind the blocks using a clean free draining material (e.g. blue metal). Allow 200mm wide for walls over half metre. Now compact backfill material thoroughly to remove all voids. **Also fill the Gardenstone blocks to remove all voids.** If backfill is needed behind the drainage area, existing site soils may be used. (Do not use heavy clay.)



### Step 5: FOLLOWING COURSES

Lay the second and subsequent courses following the same procedure e.g. use the correct backfill material and fill the blocks. Continue to lay and compact behind each block course. A Gardenstone capping block is layed as the final course (see above).



**Curved Walls:** If building a curved wall, be conscious that the length of courses will vary for a concave or convex wall, e.g.: the course length will shorten if the wall is convex and lengthen if concave.

**Minimum Diameter:** 850mm (internal dimension). This is the minimum diameter. Adjust lower courses allowing for 25mm step back.

Colours displayed in this brochure are to be used as a guide only. Colours are as close as printing process will allow. Displays in stores may vary to actual colour due to batch variation. Obtain samples from Baines Masonry for current batch colour. Care should be taken to order sufficient product to complete job at one time to avoid batch variation. Surplus blocks not returnable. No claims after 7 days or once products have been incorporated in construction.

**CHECK WITH YOUR LOCAL COUNCIL TO ENSURE ALL LOCAL BUILDING CODES ARE COMPLIED WITH**



## BAINES MASONRY

900 Wilton Rd, (PO Box 89) Appin 2560

Tel: 02 4631 1383

Fax: 02 4631 1402

Email: [info@bainesmasonry.com.au](mailto:info@bainesmasonry.com.au)

Web: [www.bainesmasonry.com.au](http://www.bainesmasonry.com.au)

GAR-BMB1