

ECS MASONRY

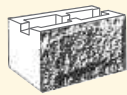
Erosion Control Systems Pty Ltd

Hermitage Sandstone

House Construction, Retaining Walls, Fencing, Piers and Feature Walls



PRODUCT	CODE	DESCRIPTION & DIMENSIONS (H x W x D)	~ WEIGHT PER UNIT	UNITS PER PALLET	~ UNITS PER M ²
---------	------	---	----------------------	---------------------	-------------------------------



20142

Bolstered Standard Unit
190 x 390 x 190
(Split knock-out available)

18.20

90

12.5



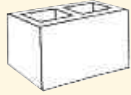
20123

Bolstered Half Unit
190 x 190 x 190

11.20

150

-



2001

Smooth Standard Unit
190 x 390 x 190
(Split knock-out available)

16.70

90

12.5



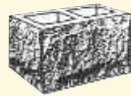
2007

Smooth Half Unit
190 x 190 x 190

10.00

180

-



20139

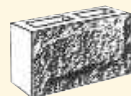
Bolstered Corner
190 x 390 x 190

18.20

72

-

200 Series



1091

Bolstered Veneer Unit
190 x 390 x 85

11.20

120

12.5



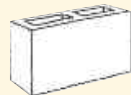
1093

Bolstered Half Veneer Unit
190 x 190 x 85

5.60

330

-



1001

Smooth Veneer Unit
190 x 390 x 90

11.20

150

12.5



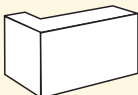
1003

Smooth Half Veneer Unit
190 x 90 x 90

5.80

360

-



1025

Smooth Corner Return
190 x 390 x 90

16.7

112

-



2038

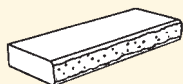
Smooth Half Height Sill
90 x 190 x 170

5.0

216

-

100 Series



5136

End Capping Unit (single sided splitface)
65 x 605 x 320

22.70

60

-



5133

End Capping Unit (single sided splitface)
65 x 390 x 320

15.50

90

-

Capping

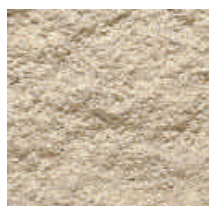
All weights and dimensions shown are approximate.

completed styles

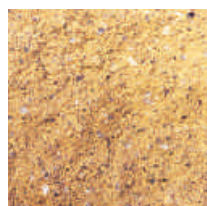


colour range

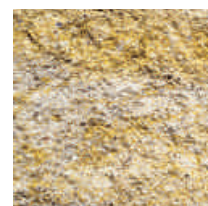
*A full range of colours are available.
Please note that Desert Sand and
Bluestone may be manufactured.
Minimum quantities and special
pricing will apply.*



Ivory



Autumn Gold



Charlestone

Sample colours are intended as a guide only and actual product colour will vary.

Hermitage Sandstone

building block system

Colour Variation

Variations in colour do occur, ordering products at one time will reduce this possibility. When laying blocks, take progressively from different pallets.

If you are using a colour blended block, randomly mix blocks in wall.

Efflorescence (a crystalline salt deposit) is a natural occurrence in masonry products. Efflorescence does not effect the structural integrity or strength of the product. Efflorescence will usually diminish and disappear in the course of time as the product is exposed to the elements. No responsibility will be accepted for the occurrence of efflorescence.

Delivery

When placing your order please confirm delivery zone pricing and minimum free delivery quantities applicable to your area.

Permits

Any council permits relating to product delivered to site are solely the responsibility of the customer. When ordering product for delivery beyond the kerb, the customer agrees to indemnify the manufacturer, supplier, carrier and agent against any action or expense relating to damage caused or consequences arising from delivery vehicles.

Colour Variation

Please contact the store where goods were purchased to report any concerns regarding product colour or quality. Claims must be reported within 48 hours of delivery. No claims will be accepted once product has been installed. ECS Masonry does not accept return of products for any reason.

Pallets

Please phone 1800 650 195 to have your pallets picked up. A receipt will be issued when pallets are collected. Please retain this receipt, as it will be required to claim any deposits paid. Pallets always remain the property of ECS Masonry.

ECS MASONRY

Erosion Control Systems Pty Ltd

www.erosioncontrol.com.au

For technical assistance please call

1 300 650 195

YOUR STOCKIST

--