

TWO WAYS TO BUILD FASTER, STRONGER AND FOR LESS!

TO GIVE YOU THE COMPETITIVE EDGE ...

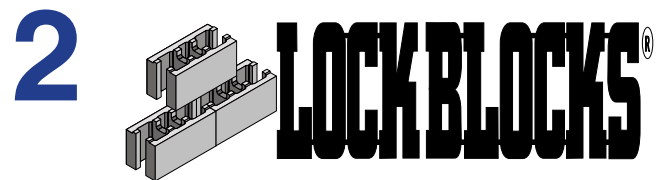


Build your walls with MASON BOND masonry adhesive instead of mortar and you'll save **TIME & MONEY.**

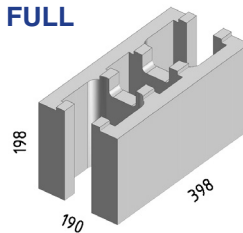
WHY ?

- ✓ Simple to apply
- ✓ Sets quickly
- ✓ Complete your masonry project in HALF the time - that's a 50% labour reduction!
- ✓ No trowelling, no premixing no waiting!
- ✓ 3.5 times stronger than mortar
- ✓ 80% less water penetration
- ✓ Economical

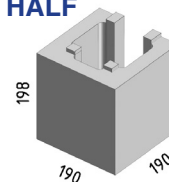
MASON BOND is a moisture cure, polyurethane adhesive formulated to permanently bond concrete masonry block structures. MASON BOND meets the requirements of the International Code Council (ICC) A362 and is recognised as an alternative to mortar in ICC's Evaluation Services Report 1968



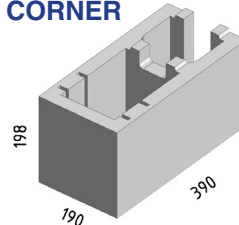
FULL



HALF



CORNER



Use our lightweight DIY alternative to concrete blocks.

WHY ?

- ✓ Self locating connectors
- ✓ Allow 2mm adhesive joint

Typical uses:

- ✓ Retaining walls
- ✓ Front fences
- ✓ Privacy walls
- ✓ Dividing walls
- ✓ Landscaping walls



**BAINES
MASONRY**

Contact us today and we will help you start reducing costs on your next project!

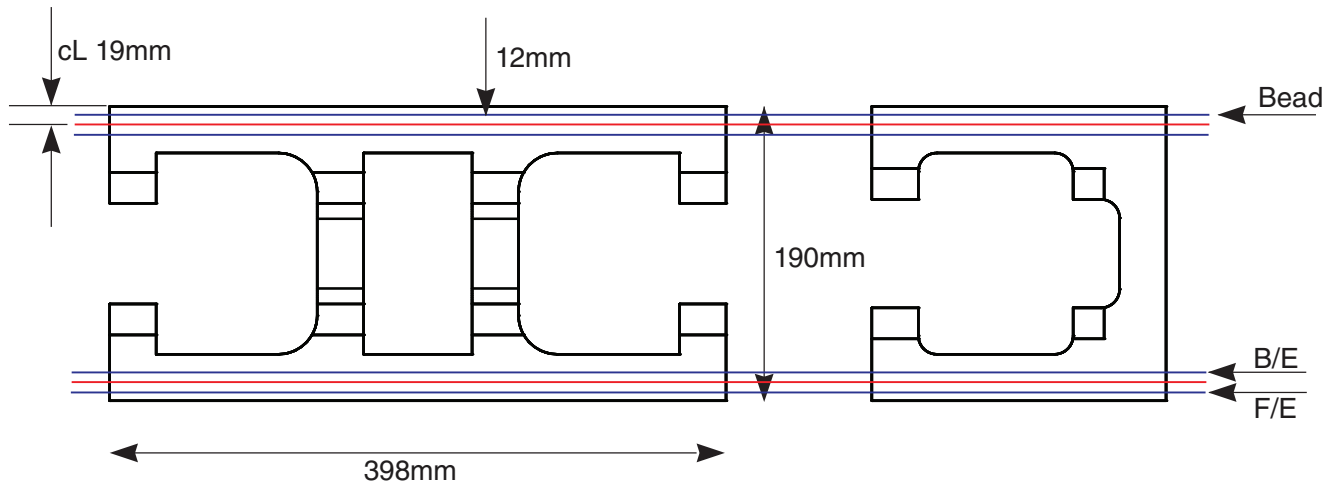
Tel: (02) 4631 1383
Fax: (02) 4631 1402
info@bainesmasonry.com.au

900 Wilton Road
(P.O. Box 89)
Appin NSW 2560

Baines Masonry distributes MASON BOND in Australia under licence from ITW TACC (USA)
LOCKBLOCKS[®] is a registered trademarks of Baines Masonry Blocks Pty Ltd and are used under licence

www.bainesmasonry.com.au

ADHESIVE BEAD PLACEMENT



B/E = Back Edge of Expanded Bead
F/E = Front Edge of Expanded Bead

Bead = Centreline of Bead should be 19mm from outer edge on 190mm blocks

Application Instructions

- Read Material Safety Data Sheet before using
- Avoid contact with skin: wear gloves and other protective clothing while applying the product. Refer to MSDS if product comes in contact with your skin
- Surfaces should be free of any debris, free from oil or dirt which may deter adhesion to block surface
- Cut end of tip to apply approximately 5mm bead. Place tube in calking gun for application
- Apply a 5mm bead adhesive to the bed joints and head joints on both sides of the block (follow Application Guide for Specific Application Instructions)
- Working/open time is approximately 15 minutes depending on temperature and humidity.
- Blocks will be immovable within 60 to 90 minutes. Full cure in 24 hours.

Clean Up Procedure

For best results, clean uncured adhesive immediately. Wipe with a clean, dry rag then apply ITW TACC's GC-33 Gun Cleaner sprayable cleaner. Wipe off residue with a clean, dry rag.

Cured adhesive can be removed by using a sprayable stripper or mechanically using a trowel, putty knife or small electric angle grinder with a flat profile, coarse, twisted wire cup brush which will not harm the block.



BAINES
MASONRY

Contact us today and we will help you start reducing costs on your next project!

Tel: (02) 4631 1383
Fax: (02) 4631 1402
info@bainesmasonry.com.au

900 Wilton Road
(P.O. Box 89)
Appin NSW 2560

Baines Masonry distributes MASON BOND in Australia under licence from ITW TACC (USA)
LOCKBLOCKS® is a registered trademarks of Baines Masonry Blocks Pty Ltd and are used under licence